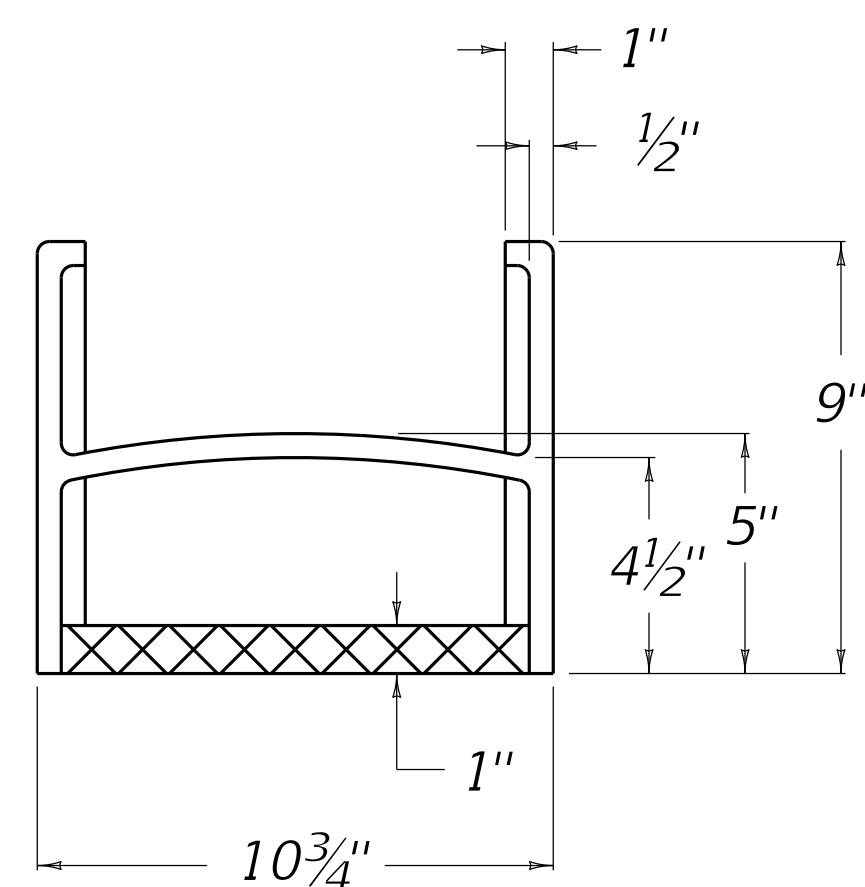
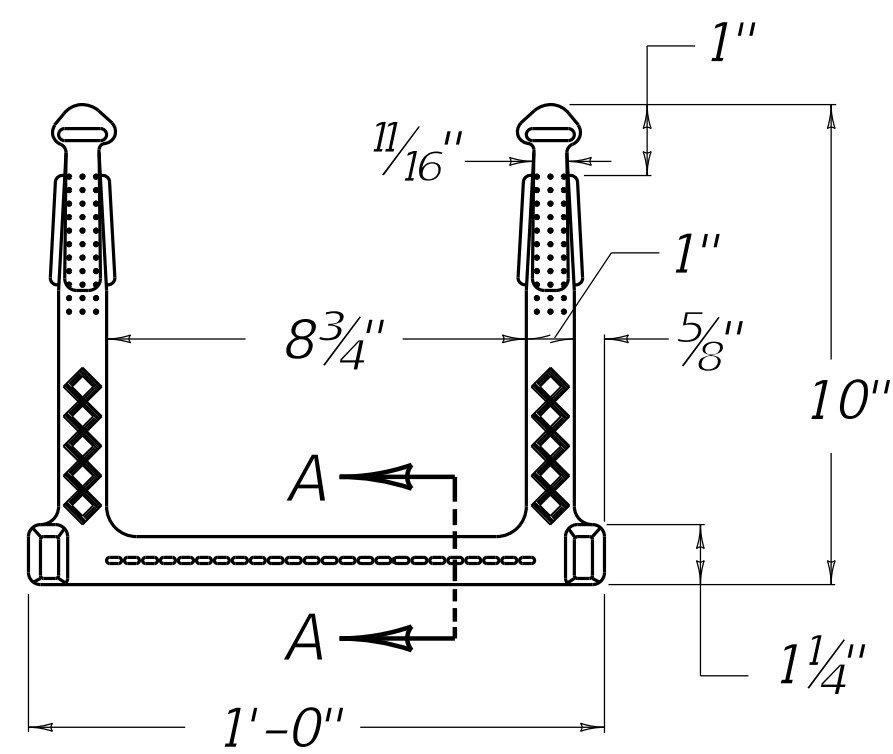


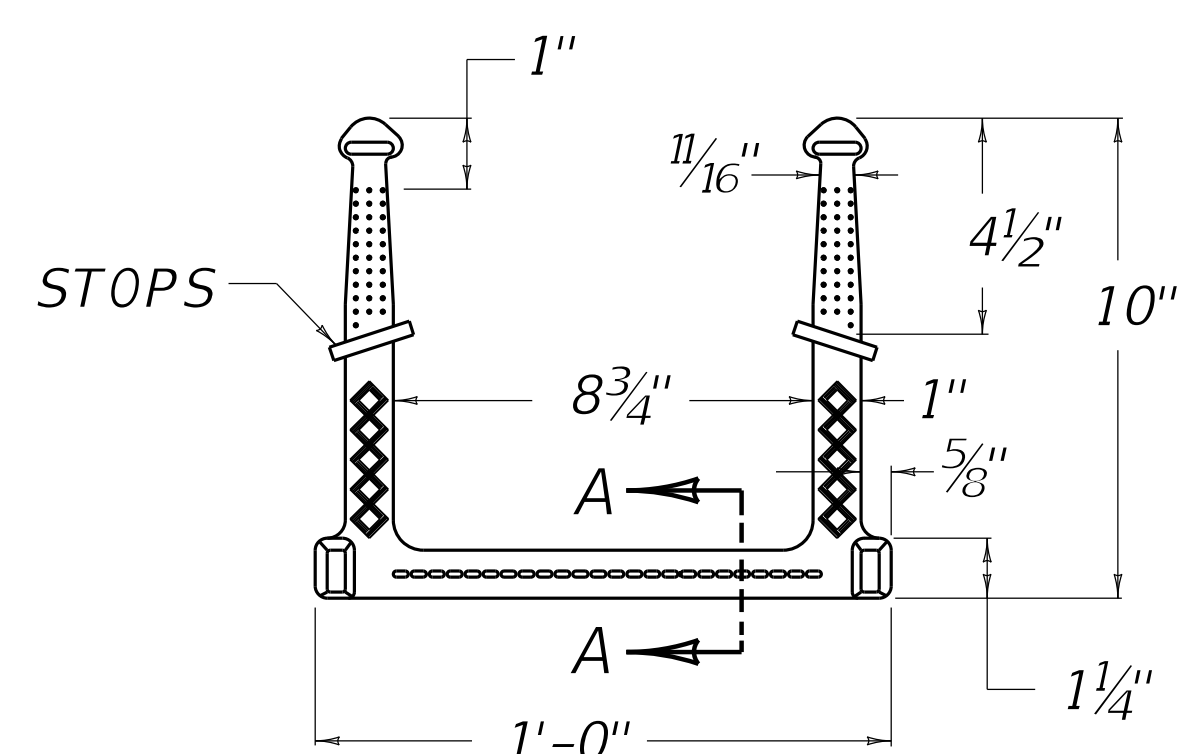
STEP TYPE NO. 1



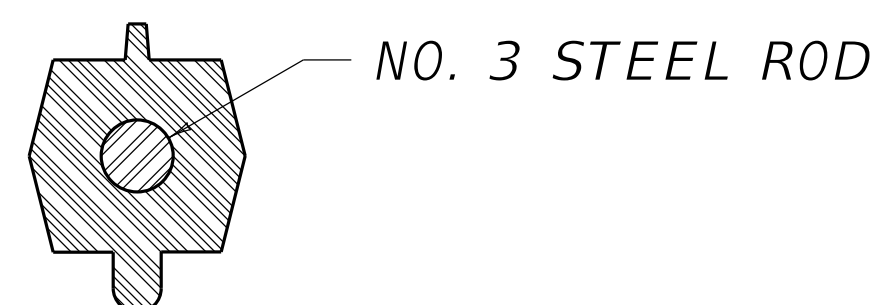
STEP TYPE NO. 2



STEP TYPE NO. 3



STEP TYPE NO. 4



SECTION A-A

~ NOTES ~

1. STEPS SHALL BE ASPHALT COATED CAST IRON OR POLYPROPYLENE PLASTIC COATED STEEL ROD OR OF A TYPE AND SIZE APPROVED BY THE ENGINEER.
2. STEPS SHALL BE SPACED APPROXIMATELY 12" TO 16" O.C. VERTICALLY SO AS TO FORM A CONTINUOUS LADDER.
3. STEPS SHALL BE REQUIRED IN MANHOLES WHEN THE STRUCTURE IS 4 FEET AND GREATER IN DEPTH. (MEASURE FROM FLOW LINE OF LOWEST PIPE TO TOP OF STRUCTURE).
4. THE TREADS OF ALL STEPS SHALL HAVE ANTI-SKID PROPERTIES FOR HAND AND FOOT GRIPS.
5. MANHOLE: USE STEP TYPE 1 OR TYPE 3 FOR MANHOLE PIPE CHAMBER AND STEP TYPE 2 OR TYPE 4 FOR MANHOLE TOWER.

USE WITH CUR. STD. DWGS.
RDM-001 RDM-005 RDM-010 RDM-050

REVISION DATE: 12/01/2015
REVISION NUMBER: 0

SUBMITTED 12-01-2015
DATE

APPROVED 12-01-2015
DATE

DRAINAGE



COMMONWEALTH OF KENTUCKY
DEPARTMENT OF HIGHWAYS

MANHOLE

STEPS

STANDARD DRAWING NUMBER
RDM-055-00